

There are three manual installation options:

October 21, 2016

One covers all 32 bit Windows operating systems XP or later (except Win10 32 bit, which is not supported).

Another covers all 64 bit Windows except Win 10

The last one covers 64-bit Win 10 only

Dlls:

You need the new LL_USB2K.dll (9.9.16.0) for 32 bit Excel, and LL_USB2K64.dll (9.9.16.0) for 64 bit Excel.

Any older installation can be made to work with the older or newer drivers by substituting these two files (or newer) for the original dlls.

With the two dlls above, any online driver installation or update will work on any supported operating system.

Drivers:

For manual installations of drivers, three files are required in 64 bit windows, and two files for 32 bit.

An .inf file and a .sys file are always needed. In 64-bit Windows, you also need a .cat file. You can generally not distinguish the different versions of these files by their names.

.inf files are text files. Open one in wordpad or notepad. What matters is the ClassGuid:

```
-----  
;                                 
;           Lawson Labs Inc.     
;           USB DRIVER FILE INF File  
;                                 
-----
```

```
[Version]  
Signature="$Windows NT$"  
Class=USB  
ClassGuid={36FC9E60-C465-11CF-8056-444553540000}  
Provider=%MANUFACTURER%  
;LayoutFile=layout.inf  
CatalogFile=%FILENAME%.cat
```

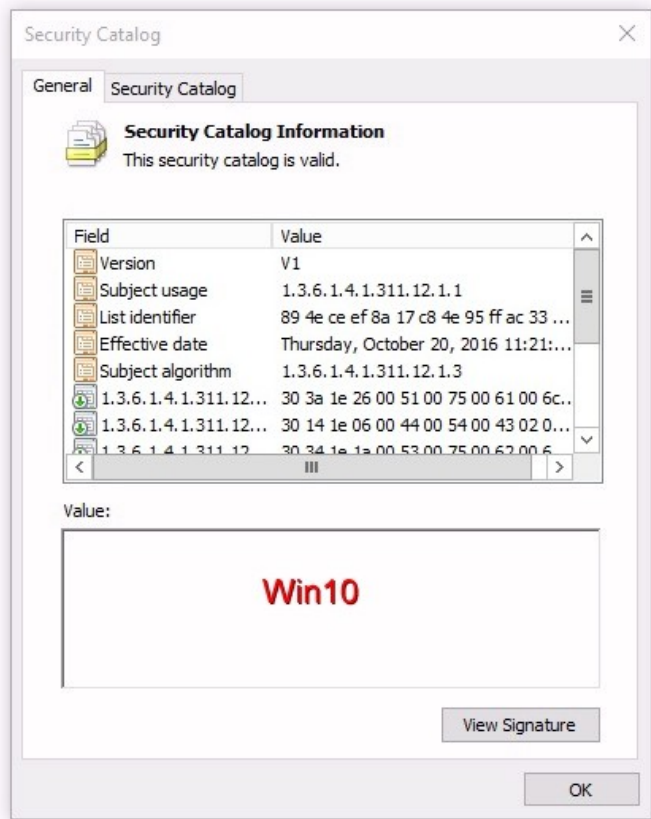
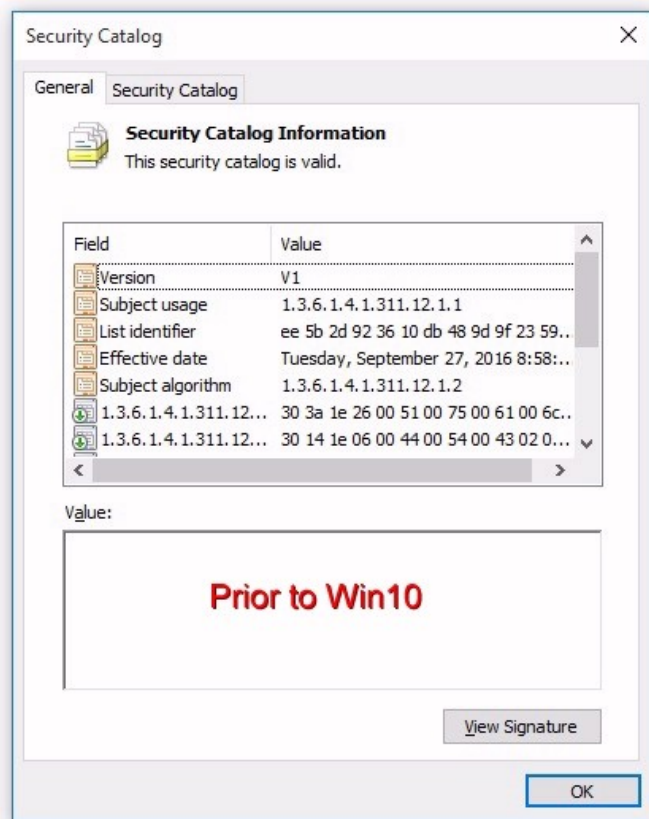
etc

For distinguishing the .sys files, right click on the filename and select Properties.

In 32 bit Windows select Version, then File Version

In 64 bit Windows select Digital Signatures

To distinguish the .cat files, double left click and compare to these screenshots:



The usual way would be to have three subfolders in your installation folder named for the target operating systems. Then, you would Browse to the correct folder to do a manual installation. All the files below are found at:

http://www.lawsonlabs.com/Download/Manuals-Drivers/Model_301_302/Docs/30x_GetInstallFiles_noMenu.html

Installation Files for each Operating System Group:

For 32 bit Windows

LL_USB2K.INF
 ClassGuid={36FC9E60-C465-11CF-8056-444553540000}
 LL_USB2k.sys
 shown in "properties->version: File version: 10,13, 2008

For 64 bit Windows prior to Win10:

LL_USB_v64.inf
 ClassGuid={36FC9E60-C465-11CF-8056-444553540000}
 LL_USB2k.sys
 shown in "properties->DigitalSignatures (only one listed):
 Lawson Labs Inc. sha1 Wednesday, December 23, 2009

LL_USB2k.cat
 See screenshots above, List Identifier

For Win10 only:

LL_USB_v64.inf

ClassGuid={88BAE032-5A81-49f0-BC3D-A4FF138216D6}

LL_USB2k.sys

shown in "properties->DigitalSignatures (both are required):

Lawson Labs Inc. sha1 Thursday, October 20, 2016

Microsoft Windows . . . sha256 Thursday, October 20, 2016

LL_USB2k.cat

See screenshots above, List Identifier

Older and newer versions will always co-exist on the same computer only if the two new dlls are placed in all the application folders.